



# EWFC 1000

**“quick-chill and hold”  
cold control**

## TECHNICAL DATA

Housing: black ABS plastic, self-extinguishing.

Dimensions: front 72x215.5 mm (2.84x8.5”), depth 110 mm (4.33”).

Mounting: flush panel mount with two mounting studs provided.

Connections: Faston connectors 6.3 mm (1/4" male spade).

Display: 12.5 mm LED (0.50”).

Push buttons: located on front panel.

Data storage: non-volatile EEPROM memory.

Operating temperature: -5...65 °C (23...149 °F).

Storage temperature: -30...75 °C (-22...167 °F).

Relay outputs: one (1) SPST relay 15(7)A 250V AC for compressor, one (1) SPDT relay 8(3)A 250V AC for defrost, two (2) SPST relays 8(3)A 250V AC for evaporator fan control and light.

Remote alarm output: one (1) output 12 Vdc/50 mA to remote alarm buzzer or relay.

Analog inputs: two (2) PTC probes for temperature control and defrost termination, one (1) insert probe for product control.

Digital inputs: four (4) digital inputs for door switch, insert probe in “parking”, compressor alarm and fan alarm.

Resolution: 1 °C (°F).

Accuracy: better than 0.5% of full scale.

Power supply (depending on model):

12 Vdc ±15%; 12, 24, 110, 220 Vac ±10%, 50/60 Hz.

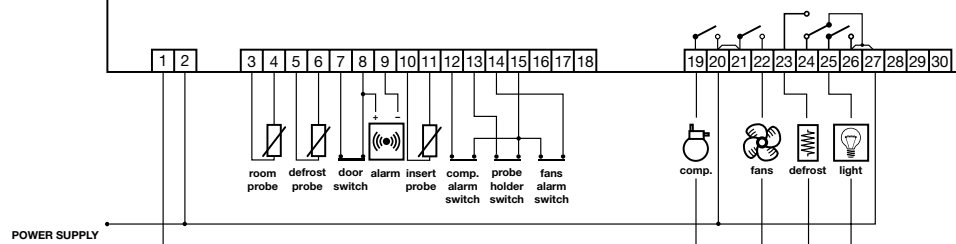
fan  
output



alarm  
output



## EWFC 1000



# EWFC 1005

**“quick-chill and hold”  
cold control, open version**

## TECHNICAL DATA

Dimensions: front 56x202 mm (“vertical” version); 202x56 mm (“horizontal” version).  
Mounting: open version.

Connections: Faston connectors 6.3 mm (1/4" male spade).

Display: 12.5 mm LED (0.50").

Push buttons: located on front panel.

Data storage: non-volatile EEPROM memory.

Operating temperature:  $-5...65^{\circ}\text{C}$  ( $23...149^{\circ}\text{F}$ ).

Storage temperature:  $-30...75^{\circ}\text{C}$  ( $-22...167^{\circ}\text{F}$ ).

Relay outputs: one (1) SPST relay 15(7)A 250V AC for compressor, one (1) SPDT relay 8(3)A 250V AC for defrost, two (2) SPST relays 8(3)A 250V AC for evaporator fan control and light.

Remote alarm output: one (1) output 12 Vdc/50 mA to remote alarm buzzer or relay.

Analog inputs: two (2) PTC probes for temperature control and defrost termination, one (1) insert probe for product control.

Digital inputs: three (3) digital inputs for door switch, compressor alarm and fan alarm.

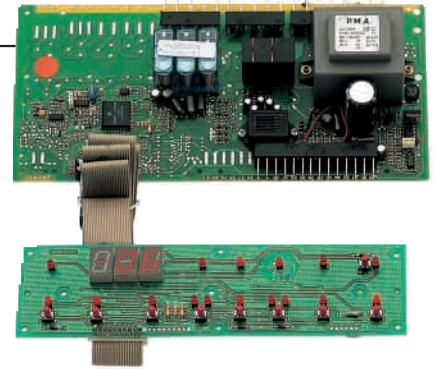
Resolution:  $1^{\circ}\text{C}$  ( $^{\circ}\text{F}$ ).

Accuracy: better than 0.5% of full scale.

Power supply (depending on model):

12 Vdc  $\pm 15\%$ ; 12, 24, 110, 220 Vac

$\pm 10\%$ , 50/60 Hz.



**fan  
output**



**alarm  
output**

